



## VALLA 1725-22 SD MOBILE CRANE MAX CAPACITY 10 t



**ENGINE:** diesel 51 HP, water cooled engine.

**TRANSMISSION:** automatic torque converter; differential axle.

**WHEELS:** 3.00 – 15” pneumatic tyres.

**STEERING:** power steering hydraulically operated.

**SUSPENSION:** oscillating rear axle.

**BRAKES:** foot operated hydraulic shoe brakes to front and rear wheels. Hand brake cable operated to front wheels.

**CRANE FRAME:** fabricated from preformed and welded steel plate with built-in counterweight. Standard carry deck.

**OUTRIGGERS:** four hydraulically independent oblique. Fitted with safety valves.

**BOOM:** fabricated from preformed and welded steel plate with 3 hydraulic telescoping sections on nylon wear pads, 360° slewing unlimited and continuously. Incorporated manual extension.

**WINCH:** hydraulically operated.

**CAB:** full vision enclosed cab, designed as an independent unit. Mounted through vibration absorbers to the frame including all driving and crane controls within easy reach of the operator.

**HYDRAULIC SYSTEM:** gear pump, electric proportional distributor controlled by single joystick, filter, safety valves on all boom operations.

**TOTAL MACHINE WEIGHT:** nearly kg 10.000.

**OPTIONAL EXTRAS:** man bucket, remote control, L.M.I. (electronic Load Moment Indicator), jib.

**Valla** S.p.A.

Via Piacenza, 45 - 29010 Calendasco - Piacenza - ITALIA  
Tel. 0039 0523 762025 - 762004 - Fax 0039 0523 760531  
Internet: [www.valla.com](http://www.valla.com) - email: [info@valla.com](mailto:info@valla.com)

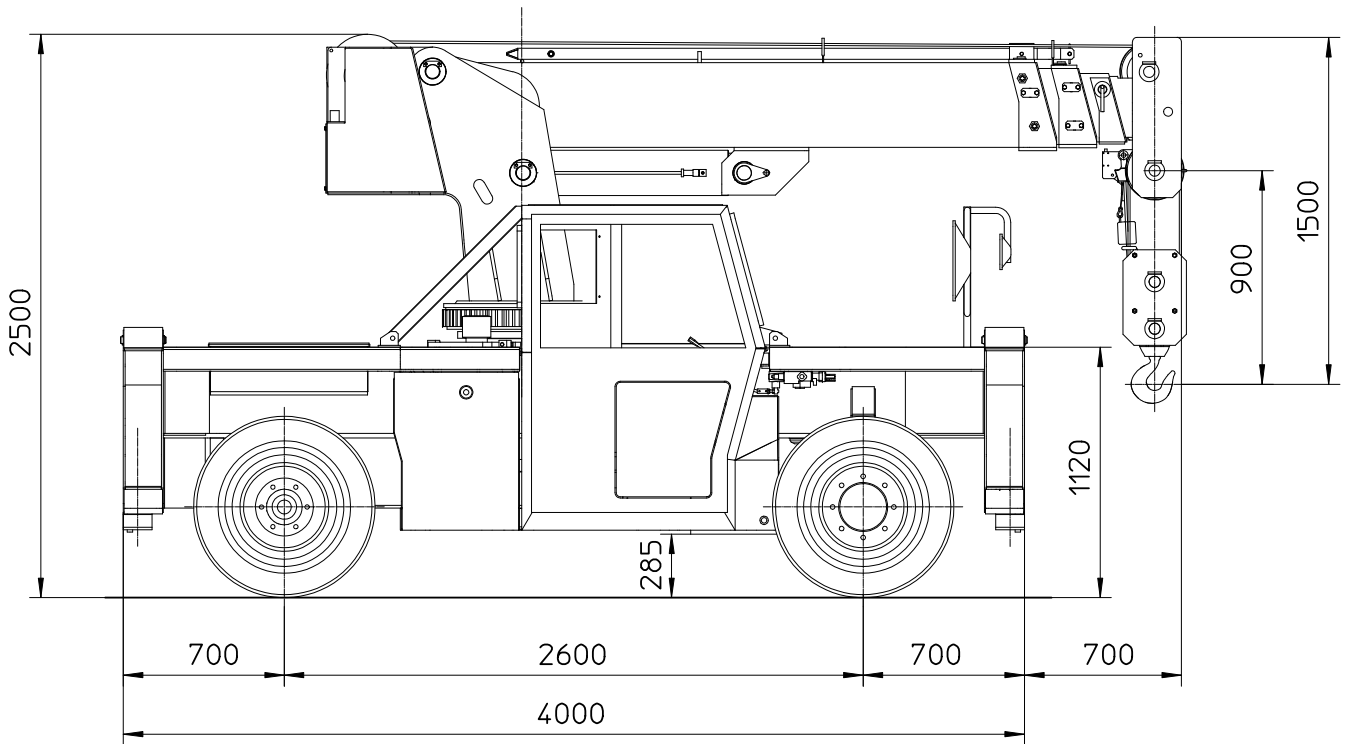
Printed by VALLA S.p.a.

March 2006

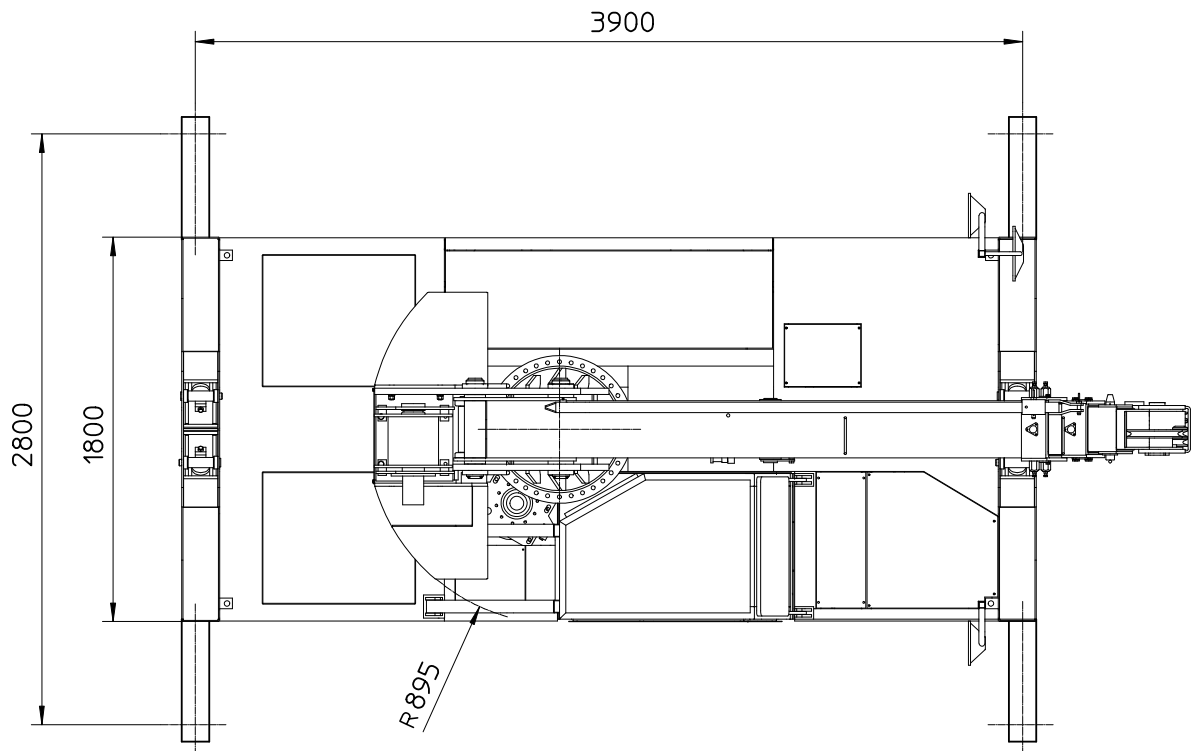
Data above are subject to be changed without any previous notice.

The crane complies with following international standards:

- I.S.P.E.S.L.
- DIN 15018 (1,3) - 15019 (1) class H 2 B3
- ANSI - 1994
- 98/37/CE
- 89/336/ CE and successive modification



### MOD. VALLA 1725-22/SD



mm

**Valla** S.p.A.

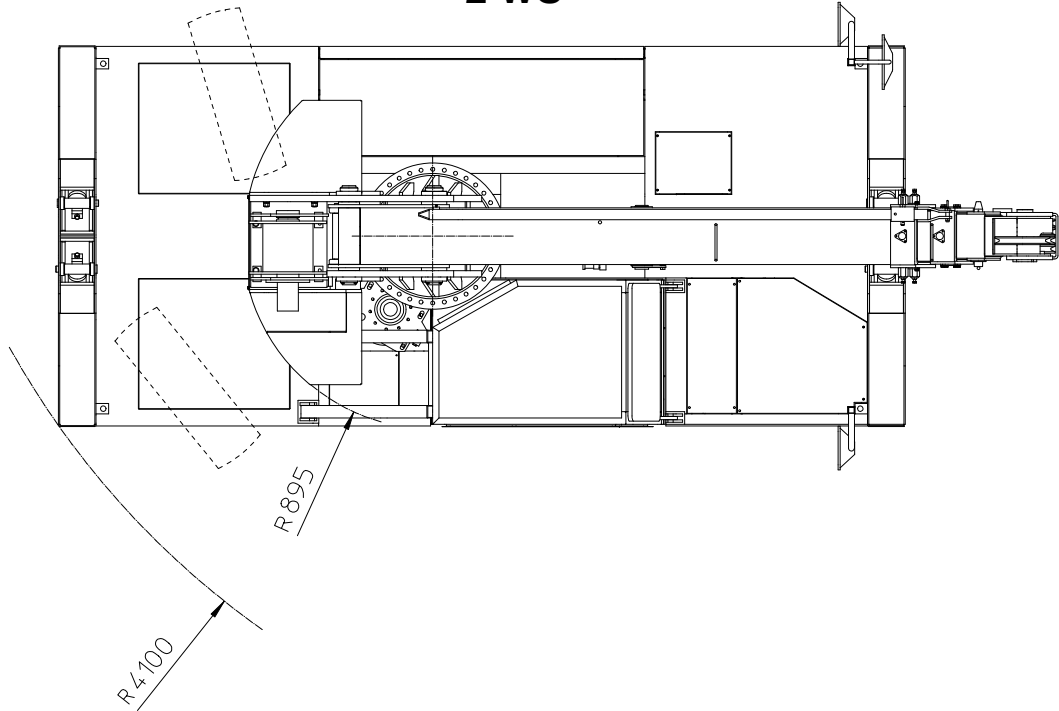
Via Piacenza, 45 - 29010 Calendasco - Piacenza - ITALIA  
Tel. 0039 0523 762025 - 762004 - Fax 0039 0523 760531  
Internet: [www.valla.com](http://www.valla.com) - email: [info@valla.com](mailto:info@valla.com)



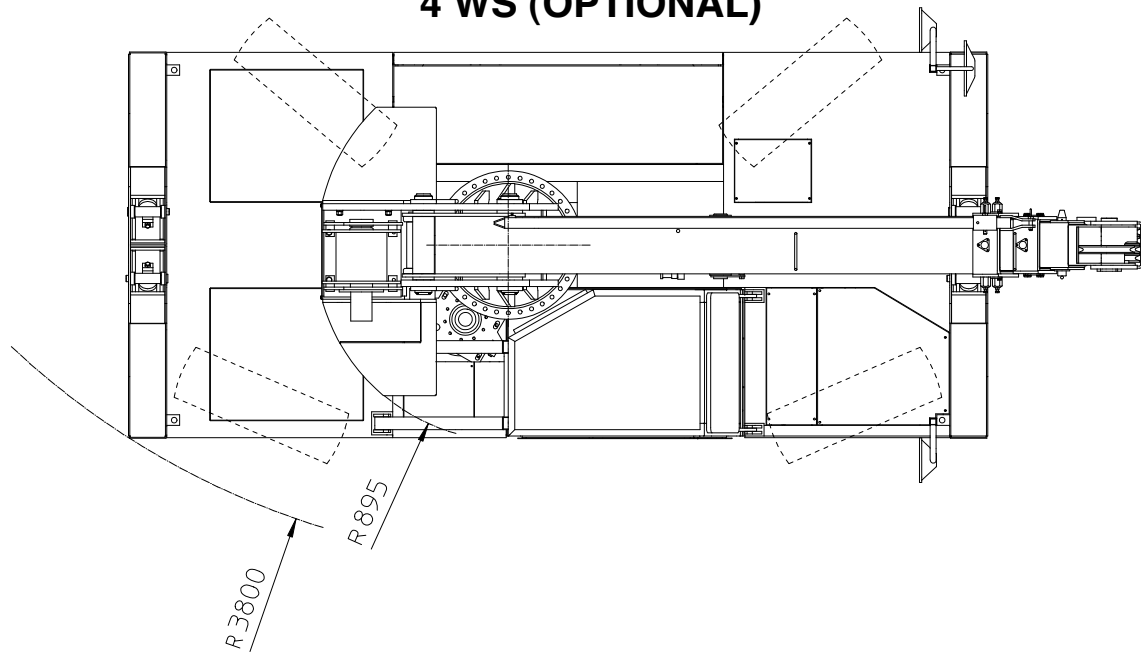


## VALLA 1725/22 SD MOBILE CRANE

2 WS



4 WS (OPTIONAL)



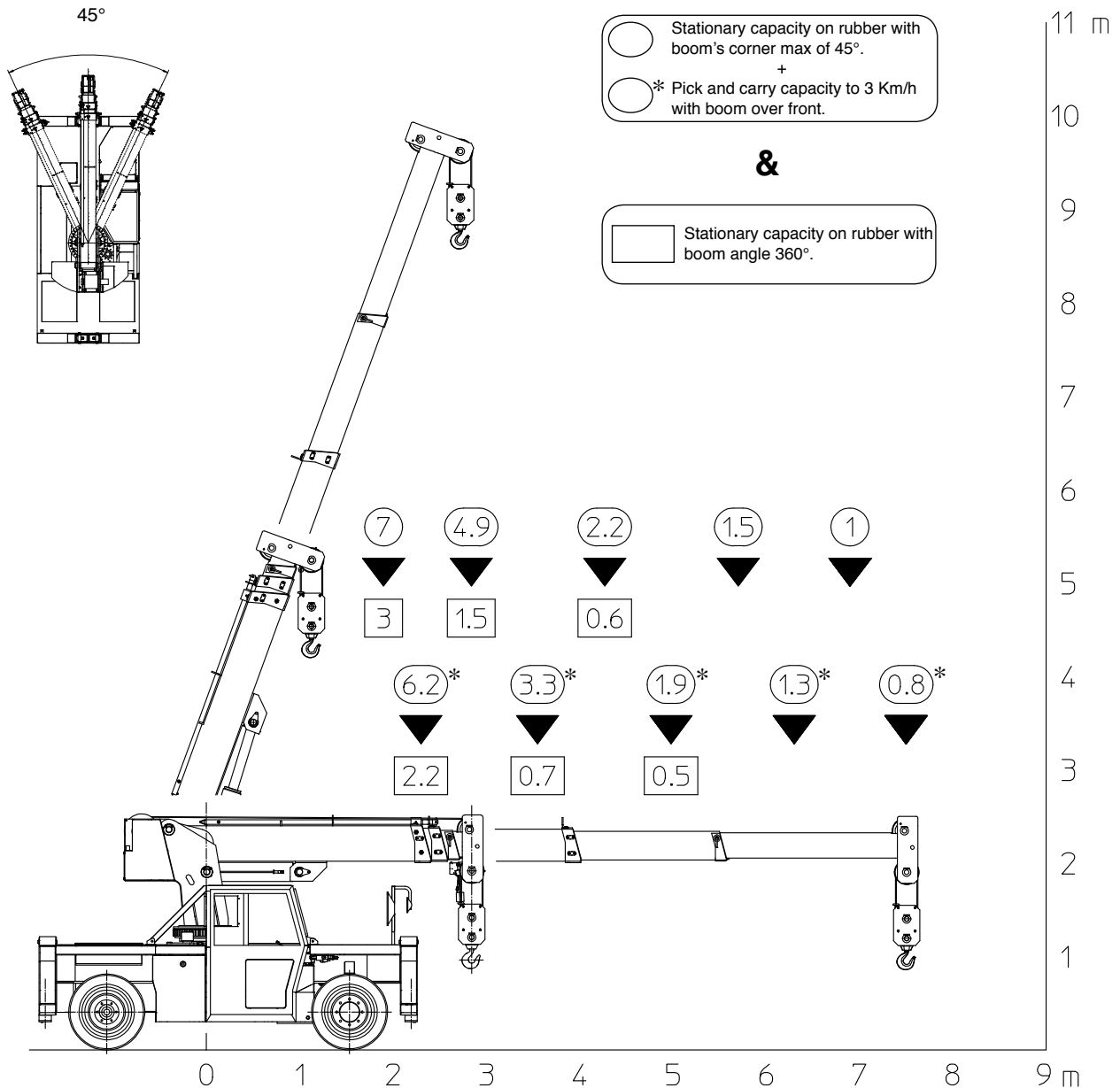
**Valla** S.p.A.

Via Piacenza, 45 - 29010 Calendasco - Piacenza - ITALIA  
Tel. 0039 0523 762025 - 762004 - Fax 0039 0523 760531  
Internet: [www.valla.com](http://www.valla.com) - email: [info@valla.com](mailto:info@valla.com)

The crane complies with following international standards:

- I.S.P.E.S.L.
- DIN 15018 (1,3) - 15019 (1) class H 2 B3
- ANSI - 1994
- 98/37/CE
- 89/336/CE and successive modification

## VALLA 1725/22 SD MOBILE CRANE

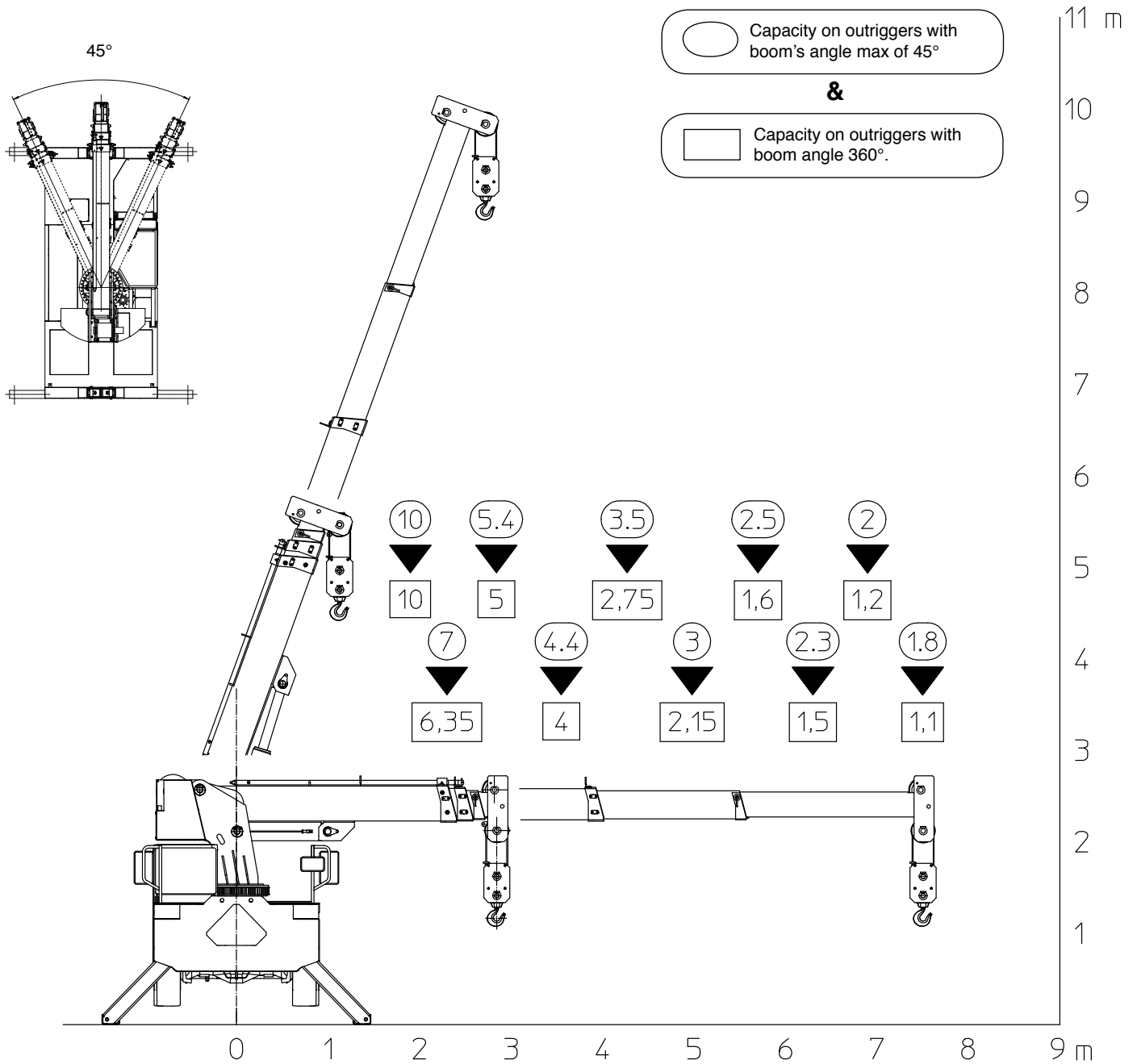


**Valla** S.p.A.

Via Piacenza, 45 - 29010 Calendasco - Piacenza - ITALIA  
 Tel. 0039 0523 762025 - 762004 - Fax 0039 0523 760531  
 Internet: www.valla.com - email: info@valla.com

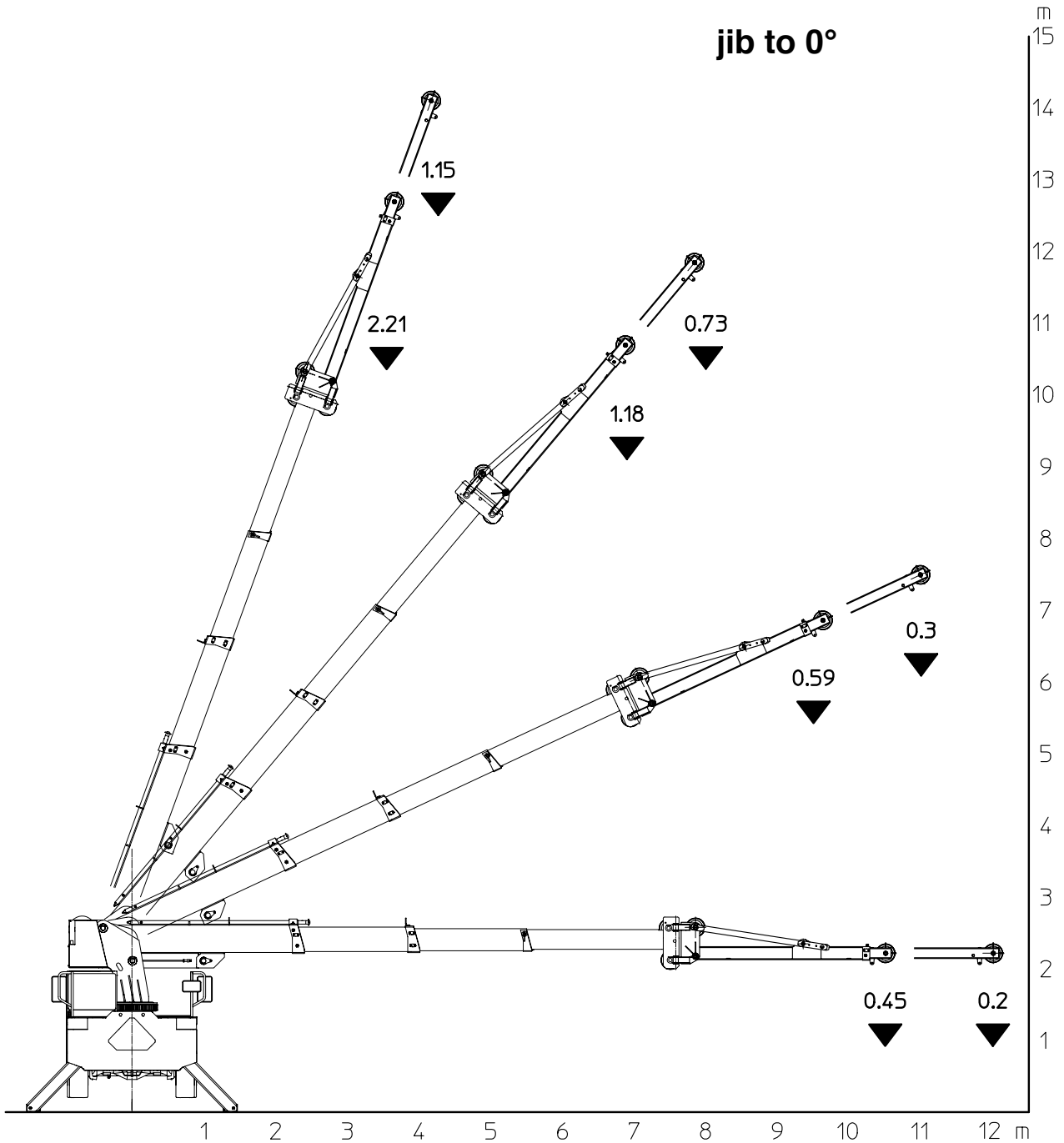


## VALLA 1725/22 SD MOBILE CRANE



The crane complies with following international standards:

- I.S.P.E.S.L.
- DIN 15018 (1,3) - 15019 (1) class H 2 B3
- ANSI - 1994
- 98/37/CE
- 89/336/ CE and successive modification



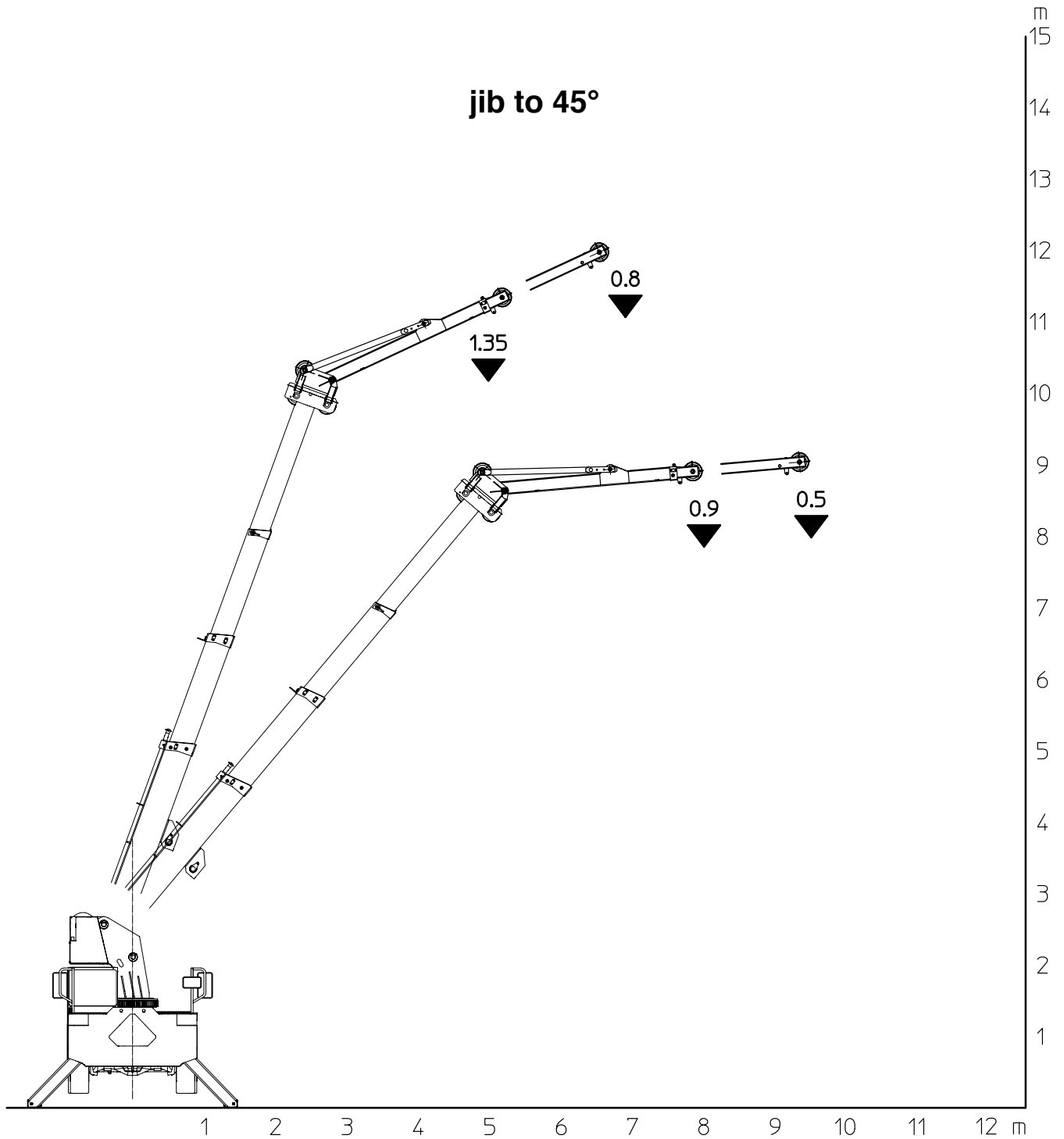
**Valla** S.p.A.

Via Piacenza, 45 - 29010 Calendasco - Piacenza - ITALIA  
Tel. 0039 0523 762025 - 762004 - Fax 0039 0523 760531  
Internet: www.valla.com - email: info@valla.com





# VALLA 1725-22 SE MOBILE CRANE



## LIFTING CAPACITY MOD. 1725-22/SE-SD

RADIUS (mt)	ON OUTRIGGERS				ON RUBBER				
	360°	OVER FRONT (max 45°)	WITH JIB 360°				STATIONARY CAPACITY OVER FRONT (max 12°)	STATIONARY CAPACITY 360°	PICK AND CARRY CAPACITY UP TO 3 km/h (boom over front)
			0° retracted	45° retracted	0° extended	45° extended			
1.90	10.000	10.000					7.000	3.000	7.000
2.30	6.350	7.000	2.390				6.200	2.200	6.200
2.85	5.000	5.400	2.240		1.410		4.600	1.500	4.900
3.55	4.000	4.400	2.210		1.320		3.300	700	3.300
4.30	2.750	3.500	1.870	1.530	1.150		2.200	600	2.200
5.00	2.150	3.000	1.700	1.400	1.040		1.900	500	1.900
5.70	1.600	2.500	1.530	1.280	960	840	1.500		1.500
6.30	1.500	2.300	1.400	1.180	910	820	1.300		1.300
6,90	1.200	2.000	1.180	1.100	870	800	1.000		1.000
7.50	1.100	1.800	1.020	990	840	780	800		800
8.00			870	900	730	750			
8.50			770	830	650	710			
9.00			670		580	620			
9.50			590		520	500			
10.0			500		460	450			
10.5			450		390				
11.0					300				
11.5					250				
12.0					200				

- Rated loads above do not exceed 80% of tipping loads on outriggers and 75% on rubber.
- Capacities above bold lines are based only on structural strenght of crane.
- Capacities and performances are for crane on firm, level surfaces.
- Pick and carry operation: boom has to be centered overfront, used in the shortest possible lenght, min radius, lowest angle, load close to the ground. Negotiating grades (max 10%) is only permitted WITHOUT LOAD and limited to short distance and time.
- When needed, outriggers must be fully extended.
- When lifting area is not clearly visible by crane's operator, the presence of a second man is mandatory for signaling.
- Never handle a load in the area above cab.