



Valla®



VALLA 1725-36 SD MOBILE CRANE MAX CAPACITY 16 t



ENGINE: diesel 80 HP, water cooled engine.

TRANSMISSION: automatic hydrostatic; differential axle.

WHEELS: 10.00 R20 pneumatic tyres.

STEERING: power steering hydraulically operated.

SUSPENSION: oscillating rear axle.

BRAKES: foot operated hydraulic shoe brakes to front and rear wheels. Hand brake hydraulically operated to front wheels.

CRANE FRAME: fabricated from preformed and welded steel plate with built-in counterweight. Standard carry deck.

OUTRIGGERS: four hydraulically independent horizontal/vertical. Fitted with safety valves.

BOOM: fabricated from preformed and welded steel plate with 3 hydraulic telescoping sections on nylon wear pads.

WINCH: hydraulically operated.

CAB: full vision enclosed cab, designed as an independent unit. Mounted through vibration absorbers to the frame including all driving and crane controls within easy reach of the operator.

HYDRAULIC SYSTEM: gear pump, electric proportional distributor controlled by single joystick, filter, safety valves on all boom operations.

TOTAL MACHINE WEIGHT: nearly kg 11.500.

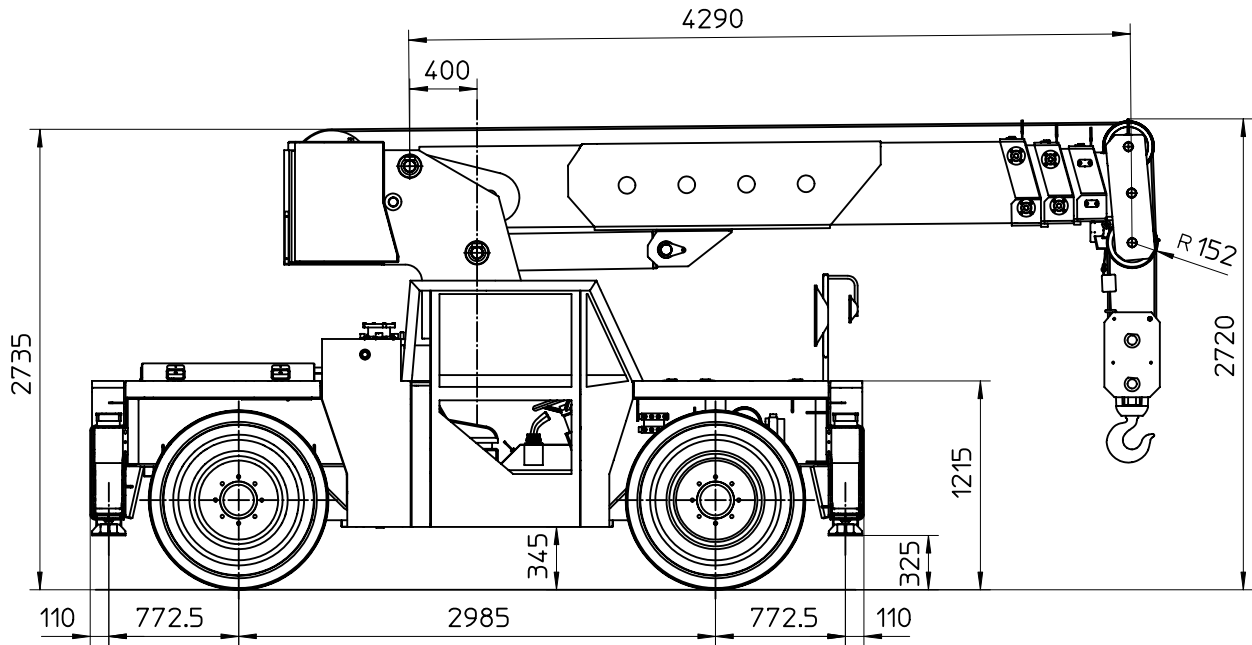
OPTIONAL: man bucket, remote control, L.M.I. (electronic Load Moment Indicator), jib.

Valla S.p.A.

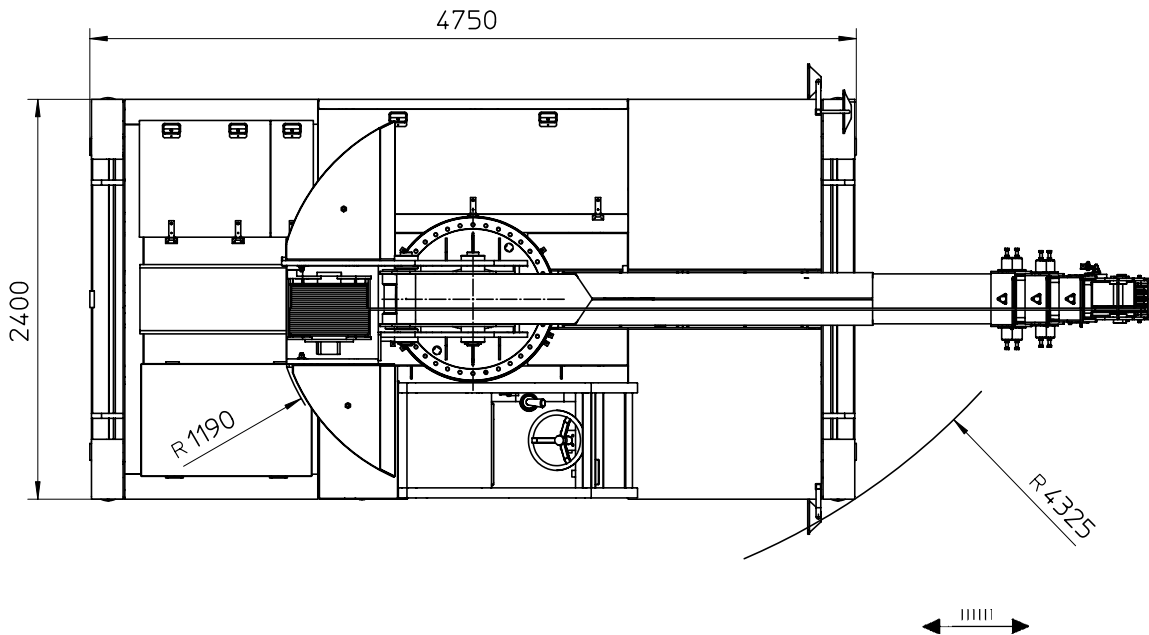
Via Piacenza, 45 - 29010 Calendasco - Piacenza - ITALIA
Tel. 0039 0523 762025 - 762004 - Fax 0039 0523 760531
Internet: www.valla.com - email: info@valla.com

The crane complies with following international standards:

- I.S.P.E.S.L.
- DIN 15018 (1,3) - 15019 (1) Class H2 B3
- ANSI - 1994
- 98/37/CE
- 89/336/CEE



VALLA MODEL 1725/36 SD

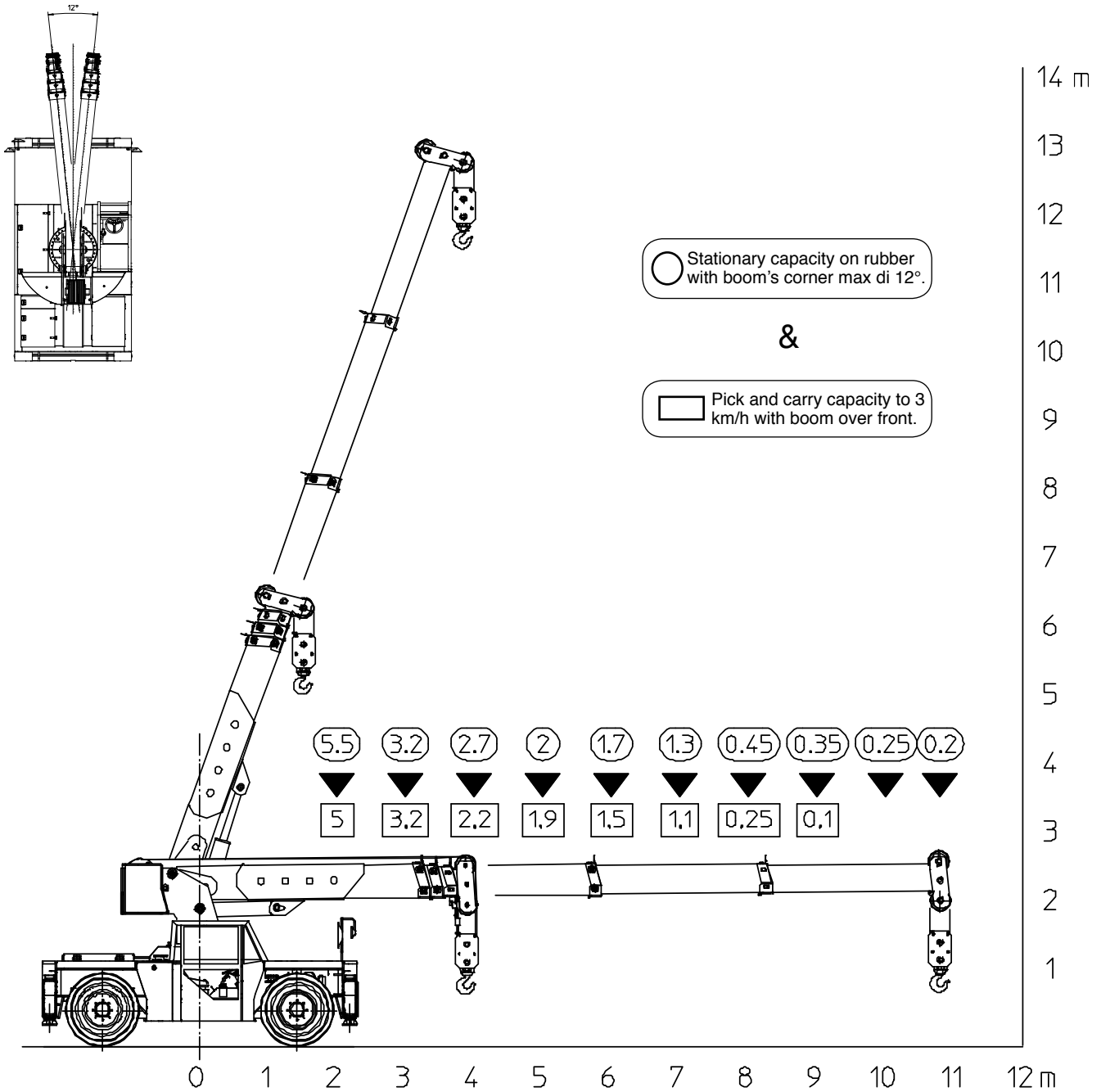


Valla S.p.A.

Via Piacenza, 45 - 29010 Calendasco - Piacenza - ITALIA
Tel. 0039 0523 762025 - 762004 - Fax 0039 0523 760531
Internet: www.valla.com - email: info@valla.com



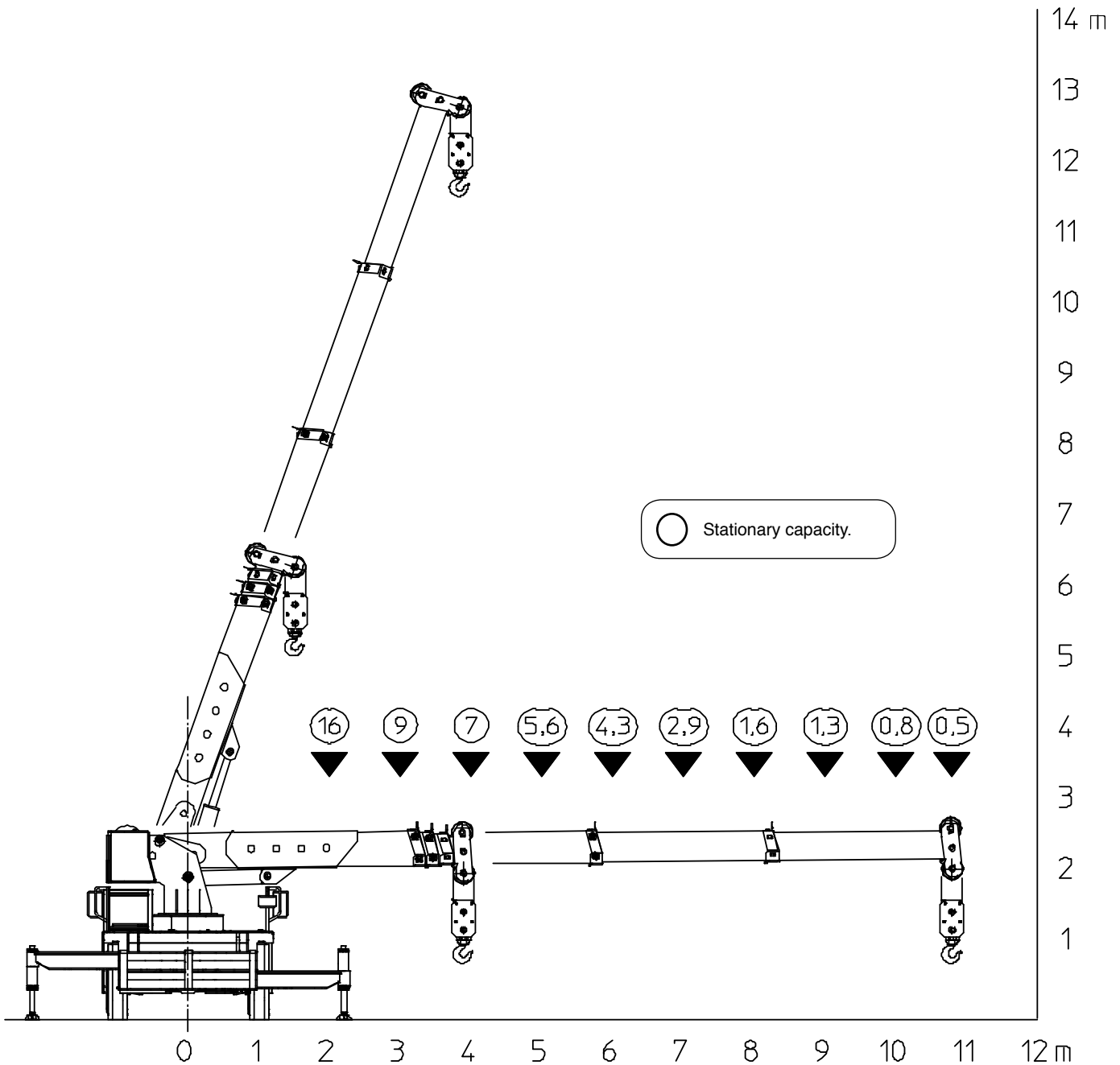
VALLA 1725/36 SD MOBILE CRANE



The crane complies with following international standards:

- I.S.P.E.S.L.
- DIN 15018 (1,3) - 15019 (1) Class H2 B3
- ANSI - 1994
- 98/37/CE
- 89/336/CEE

VALLA 1725/36 SD MOBILE CRANE



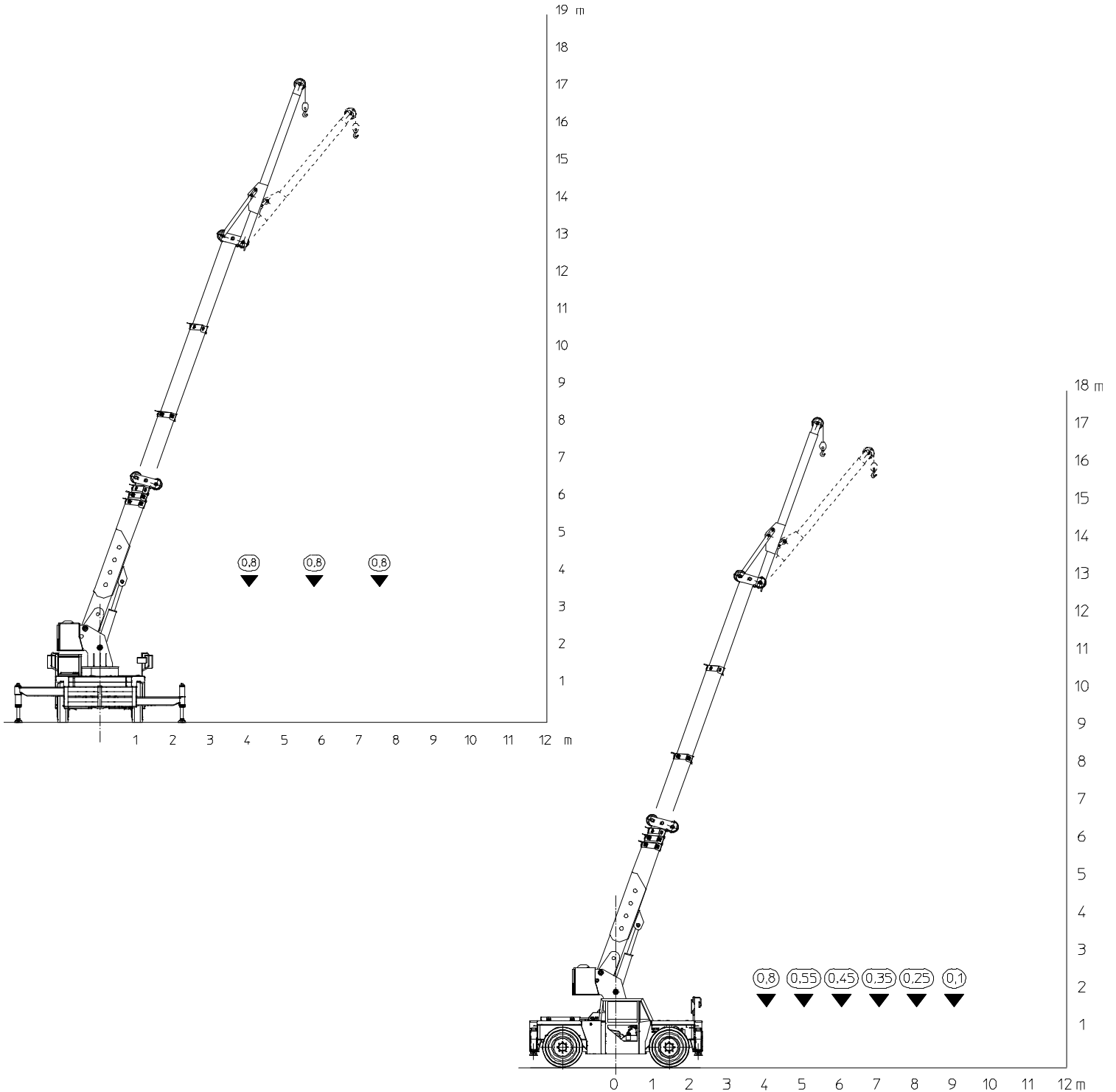
Valla S.p.A.

Via Piacenza, 45 - 29010 Calendasco - Piacenza - ITALIA
Tel. 0039 0523 762025 - 762004 - Fax 0039 0523 760531
Internet: www.valla.com - email: info@valla.com





VALLA 1725/36 SD MOBILE CRANE



Valla S.p.A.

Via Piacenza, 45 - 29010 Calendasco - Piacenza - ITALIA
Tel. 0039 0523 762025 - 762004 - Fax 0039 0523 760531
Internet: www.valla.com - email: info@valla.com

LIFTING CAPACITY MOD. 1725-36/SD-SE

RADIUS (mt)	ON OUTTRIGGERS	ON RUBBER		
	360°	STATIONARY CAPACITY OVER FRONT (max 12°)	STATIONARY CAPACITY 360°	PICK AND CARRY CAPACITY UP TO 3 km/h (boom over front)
1.50	----	---	---	---
2.00	16.000	5.500	3.900	5.000
2.50	12.000	4.000	3.000	4.000
3.00	9.000	3.200	2.000	3.200
3.50	8.000	3.000	1.500	2.500
4.00	7.000	2.700	1.200	2.200
4.50	6.300	2.200	950	2.000
5.00	5.600	2.000	700	1.900
5.50	4.800	1.800	650	1.700
6.00	4.300	1.700	500	1.500
6,50	3.600	1.500	450	1.300
7.00	2.900	1.300	340	1.100
7.50	2.000	500		300
8.00	1.600	450		250
8.50	1.400	400		150
9.00	1.300	350		100
9.50	1.100	300		
10.0	800	250		
10.5	500	200		

- Rated loads above do not exceed 80% of tipping loads on outriggers and 75% on rubber.
- Capacities above bold lines are based only on structural strenght of crane.
- Capacities and performances are for crane on firm, level surfaces.
- Pick and carry operation: boom has to be centered overfront, used in the shortest possible lenght, min radius, lowest angle, load close to the ground. Negotiating grades (max 10%) is only permitted WITHOUT LOAD and limited to short distance and time.
- When needed, outriggers must be fully extended.
- When lifting area is not clearly visible by crane's operator, the presence of a second man is mandatory for signaling.
- Never handle a load in the area above cab.