



Valla®



VALLA 400 D MOBILE CRANE MAX CAPACITY 40 t



ENGINE: 6 cylinder, Iveco 134 kW - 182 HP.

TRANSMISSION: automatic torque converter - 3 gear forward + 3 gear reverse; max speed up to 25 km/h - hydraulic pump PTO.

ELECTRIC SYSTEM: 24 V .

HYDRAULIC SYSTEM: proportional control valves, filters, safety valves.

AXLES: 1 steer oscillating + 1 driving rigid.

BRAKES: service hydraulic (disk brakes), parking hydraulic.

STEERING: hydraulic power steering.

CAB: automotive type.

TYRES: 14.00 - 24" - 4 on drive axle + 2 on steering axle.

FRAME: fabricated from preformed and welded steel plate.

BOOM: fabricated from preformed and welded steel plate - with 3 hydraulic sections, entirely automatic - nylon pads.

WINCH: hydraulic with cable inside the boom.

WEIGHT: 29.000 kg.

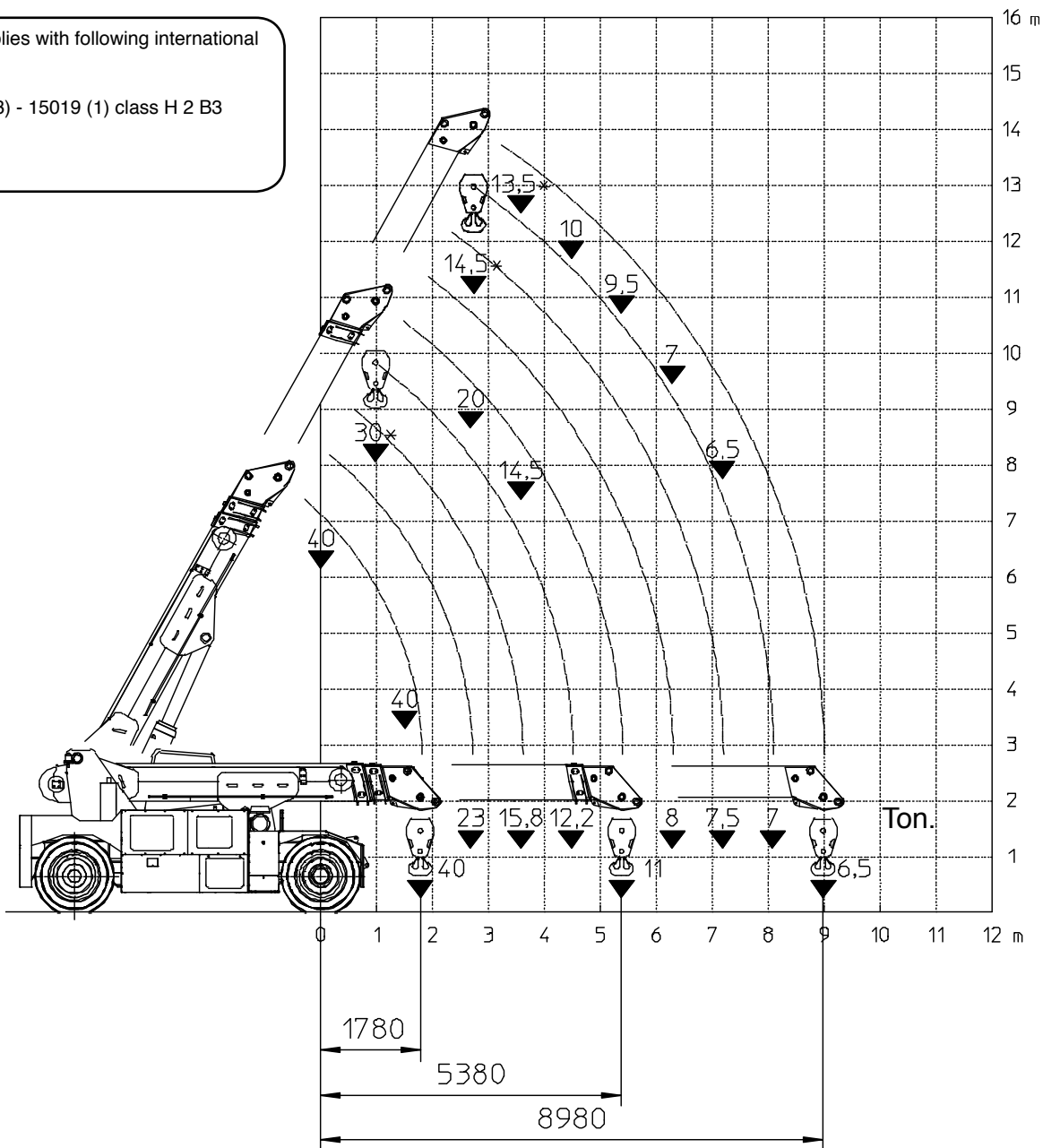
OPTIONS: L.M.I. (Electronic Load Moment Indicator), man bucket, hydraulic jib, remote control.

Valla S.p.A.

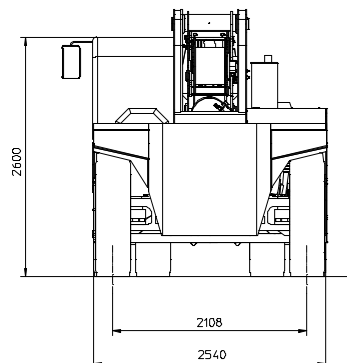
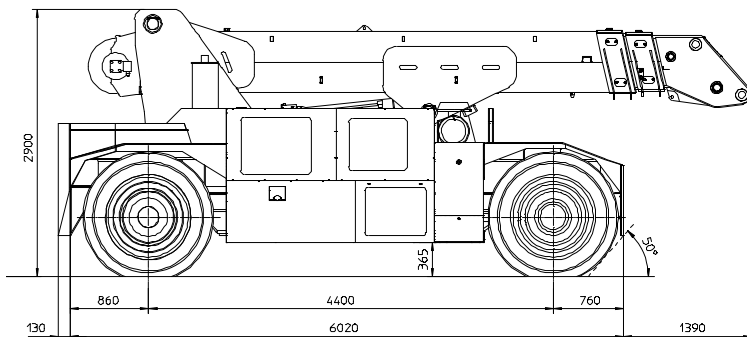
Via Piacenza, 45 - 29010 Calendasco - Piacenza - ITALIA
Tel. 0039 0523 762025 - 762004 - Fax 0039 0523 760531
Internet: www.valla.com - email: info@valla.com

The crane complies with following international standards:

- I.S.P.E.S.L.
- DIN 15018 (1,3) - 15019 (1) class H 2 B3
- ANSI - 1994
- 98/37 CE
- 89/336 CEE



VALLA MODEL 400 D



mm

Valla S.p.A.

Via Piacenza, 45 - 29010 Calendasco - Piacenza - ITALIA
 Tel. 0039 0523 762025 - 762004 - Fax 0039 0523 760531
 Internet: www.valla.com - email: info@valla.com

