

# Twisco

## ■ SLT 420 B


### The multi-purpose pocket telehandler !


- Capacity : 2000 kg
- Compact
- Manœuvrable
- Rough terrain





 **MANITOU**


# Twisco SLT 420 B

 **Lifting capacity** (with forks carriage) .....2000 kg  
(500 mm load centre)


 **Lifting height** (with forks carriage) .....4,02 m  
**Max. front reach**.....2,26 m


 **Tyres**  
Front and rear .....31 x13-16,5

 **Skid steer loader carriage**  
In option : hydraulic line at boom head and back to tank  
(250 bar/40 L/mn)

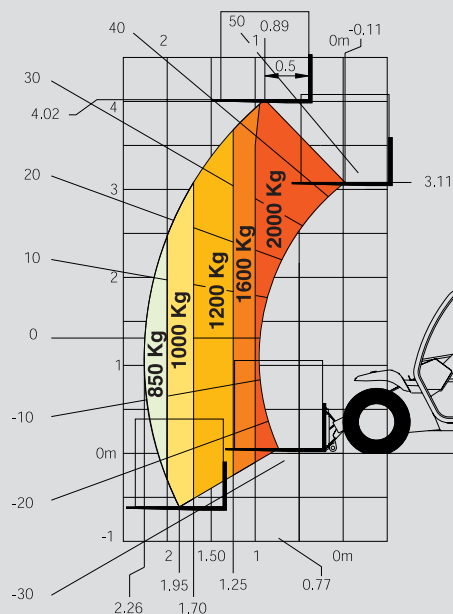
 **Perkins 404 C22 engine**  
Capacity .....4 cyl. - 2216 cm3  
Power .....(ISO/TR 14396) 50 HP/38 kw  
Rated speed .....2800 r.p.m  
Max. torque .....143 Nm at 1800 r.p.m  
Cooling .....water

 **Transmission** .....hydrostatic  
3 wheel drive  
Reversing shift on JSM joystick  
Travel speed : ..... 12 km/h  
Parking brakes .....on front wheels

 **Hydraulic**  
Main geared pump .....250 bar/40 L/mn

 **Weight** (with carriage and forks) .....3085 kg  
**Overall width** .....1662 mm  
**Overall height** .....1900 mm  
**Turning radius** (rear wheel axle) .....2225 mm  
**Ground clearancel** .....258 mm

This publication in no way constitutes an offer and the company reserves the right to alter specification without prior notice.  
The MANITOU models presented in this brochure can be supplied complete with optional equipment attachments.



Rough terrain standard EN 1459 B

## SKID STEER LOADER ATTACHMENTS ADAPTATION



CBC



4x1Bucket



CBG



Sweeper



Concrete mixer



**MANY  
OTHER  
ATTCHMENTS**

**CALL US FOR MORE INFORMATION**



JSM (Joystick Switch and Move)



**MANITOU BF SA**

B.P. 249 - 44158 Ancenis Cedex - France  
Tél. : 33 2 40 09 10 11 / Export Department Fax : 33 2 40 09 10 97  
www.manitou.com

700324EN - Doc. BE 313 Ind. C

